

COMITATO ORGANIZZATORE



MTBO
WORLD
CUP

VENETO • ITALY



COPPA DEL MONDO 2010
MOUNTAIN BIKE ORIENTEERING
17-20 SETTEMBRE
TEOLO (PD) ITALIA
PARCO REGIONALE COLLI EUGANEI



ORITOURIST

Associazione per la promozione ecosostenibile dei territori locali
Via E. Ferrari, 15 - 30037 Scorzè (VENEZIA) - Tel. 041 5845003 - info@oritourist.it

COMITATO ORGANIZZATORE



MTBO
WORLD
CUP

VENETO • ITALY

MTBO WORLD CUP 2010 FINAL ROUND

VENETO - ITALY

17-20 SEPTEMBER 2010

TEOLO – VÒ

PARCO REGIONALE DEI COLLI EUGANEI



BULLETIN N° 2

- *Welcome, organization and addresses*
- *Detailed Program*
- *Event area and sites*
- *Terrains and maps*
- *Embargoed areas*
- *Race classes, participation & entry fees*
- *Rules*
- *Accommodations, transports & catering*
- *Entries*
- *Local Promoters*

www.mtboitaly2010.it

ORITOURIST

Associazione per la promozione ecosostenibile dei territori locali
Via E. Ferrari, 15 - 30037 Scorzè (VENEZIA) - Tel. 041 5845003 - info@oritourist.it

WELCOME OF THE ORGANIZERS

The Italian Orienteering Federation (FISO) and the Honour Committee are pleased to welcome you to the final round of World Cup 2010 in Mountain Bike Orienteering.

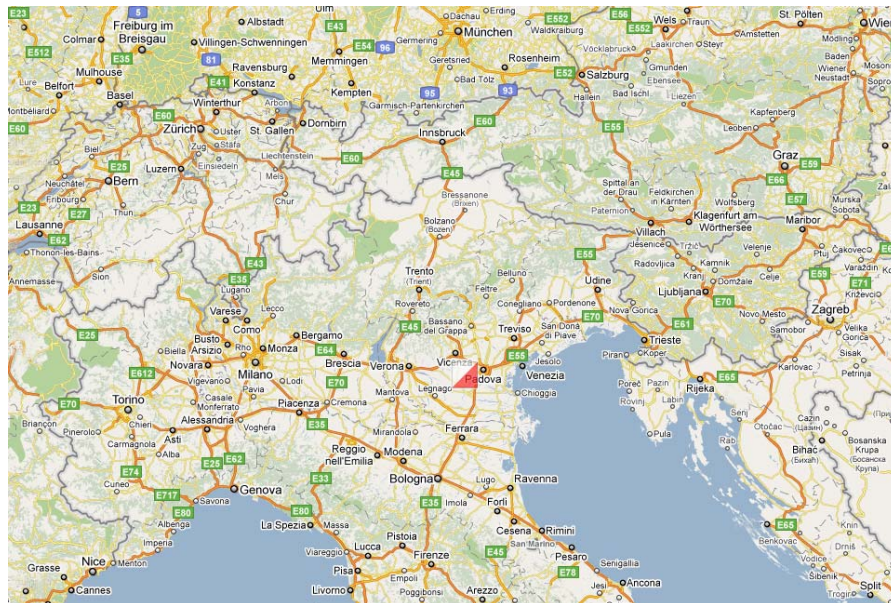
We are very proud to offer you three challenging races on some very technically demanding terrains and maps. Also, you will have the opportunity to visit one of the most interesting regions of Italy, from historical, artistic and naturalistic point of view.

The terrains where the WC races are held are close and technically similar to those ones which will host next year the World MTBO Senior and Junior World Championship.

Just to mention a couple of places where you can spend your spare time, Padua is in the neighbourhood and Venice less than one hour away, but the whole Veneto region is worth while to visit as well as the wonderful hilltops of the Natural Park of Colli Euganei.

I wish to all of you a pleasant stay and good races.

Sergio Grifoni
President,
FISO - Italian Orienteering Federation.



Event center of MTBO World Cup Italy 2010 will be in Teolo (PD)
Piazza del Mercato, BRESSEO - TREPONTI DI TEOLO

Honour Committee

Sergio Grifoni	<i>FISO, President</i>
Gianfranco Bardelle	<i>CONI, Del. Regionale del Veneto, President</i>
Mauro Gazzerro	<i>FISO, Comitato Regionale Veneto, President</i>
Dino Ponchio	<i>CONI, Del. Provinciale di Padova, President</i>
Marino Zorzato	<i>Regione Veneto, Sport Counsellor</i>
Leandro Comacchio	<i>Provincia di Padova, Sport Counsellor</i>
Chiara Matteazzi	<i>Parco Regionale dei Colli Euganei, President</i>
Lino Ravazzolo	<i>Comune di Teolo, Major</i>
Giuliano Martini	<i>Comune di Vò Euganeo, Major</i>
Cap.Massimiliano Kornfeind	<i>Comp.Carabinieri Abano Terme, Commander</i>

Organizing Committee

MTBO World Cup will be organized by
Comitato Organizzatore MTBO-WC Italy 2010
Via Enzo Ferrari, 15
30037 SCORZÈ (VE) Italy
www.mtboitaly2010.it

Event Director

Cesare Tarabocchia
Via Colarich, 58/A
34015 MUGGIA (TS) Italy
e-mail info@mtboitaly2010.it

Vice Event Director *Michele Mogno*

Informations

Cesare Tarabocchia
mobile: +39 335 8298594 - e-mail info@mtboitaly2010.it

Accommodation

Jockey Viaggi – Mr. Giancarlo Reverenna
Phone : +39 049 9902930 fax : +39 049 9902933
e-mail: info@thermal-hotels.com

IOF Event Adviser

Sandor Talas (HUN)
mobile: +36 20 364 2734 - e-mail: sandor.talas@gmail.com

National Controller

Simone Grassi
e-mail: vecchiotasso.simo@fastwebnet.it

Mapping Daniele Danieli, Alessandro Casarin

Director of Arrangements Alessandro Casarin – Or. Swallows Noale

Event Center Gianpietro Mazzeni – Or. Galilei Venezia

Information, economy marketing Michele Mogno – Mauro Fizzoni

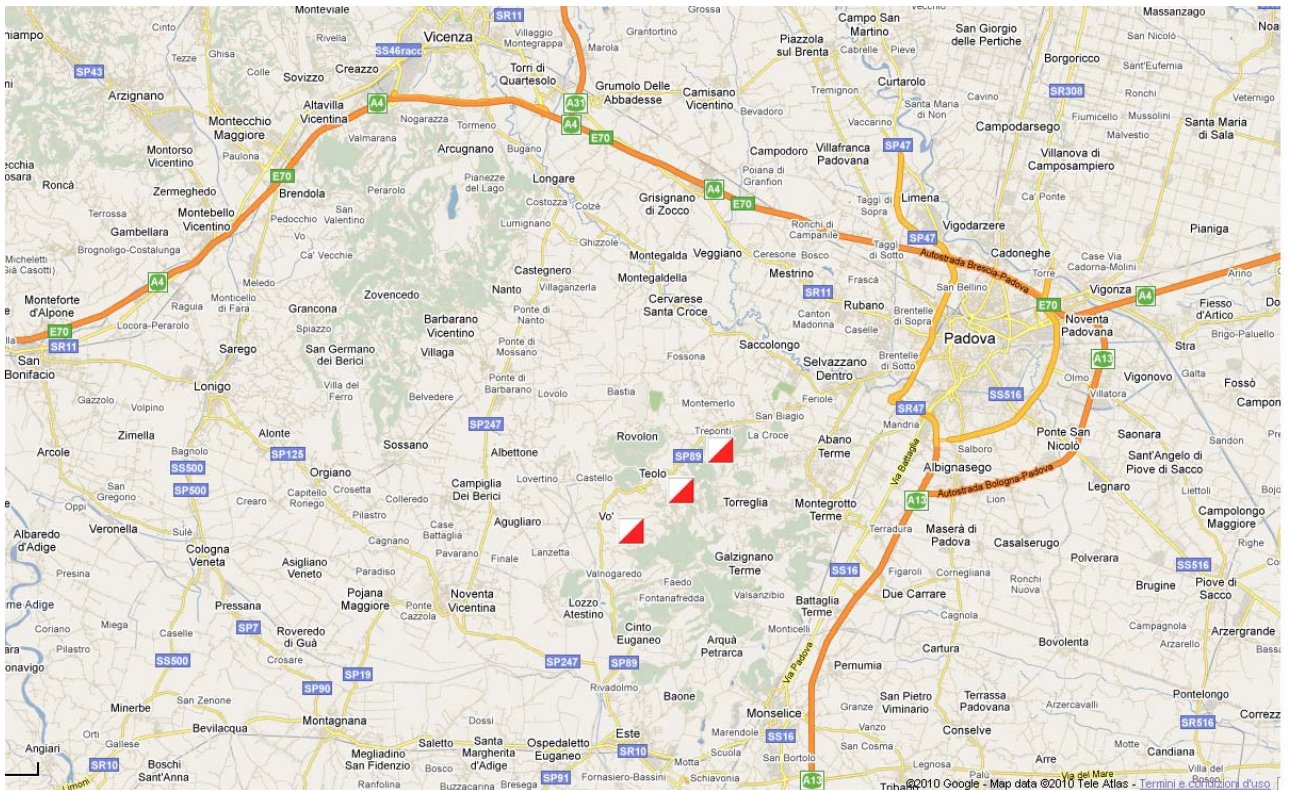
Administrative matters Arianna Ghedin

Associazione ORITOURIST

Via Ferrari 15. 30037 Scorzè (VENEZIA)

Ph. +39/041/5845003 – Fax +39/041/5845007

info@oritourist.org



Day 1 – Vò Euganeo

Day 2 – Teolo

Day 3 – Treponti

EVENT PROGRAM – WORLD CUP

Friday September 17

Arrival of Teams

10.00am – 10.00pm *Event Center is open in Bresseno, Piazza del Mercato*

ESTE

11.30pm *Press Conference - presentation of "Final Round MTBO World Cup 2010" and "Italian Middle MTBO Championship"*

1.00 – 6.00pm *Guided tours to city of Este and Parco dei Colli Euganei*

VÒ EUGANEO

4.00 – 7.00pm *Model Event (from sport field area)*

TEOLO

8.00PM *Team Leaders' Meeting (Sala Bazzi, Treponti)*

Saturday September 18

8.00am – 10.00pm *Competition Center is open in Vò Euganeo*

VÒ EUGANEO

11.00am – 3.00pm *World Cup MTBO – Middle race*

3.30pm – 6.00pm. *Italian MTBO National Championship Middle*

12.00am – 5.00pm *Lunch opportunity in Vò, pizza at fixed price for teams*

3.00pm – 5.00pm *Guided visits to wine producers in Vò area, with wine testing and buying opportunities.*

5.30pm *Opening Ceremony World Cup Veneto 2010*

6.30pm *Prizegiving Ceremony World Cup and Italian Championship*

8.00pm *Team Leaders' Meeting (Library Hall, Vò)*

8.00pm – 11.00pm *Dinner opportunities in Vò, Festa dell'Uva*

9.00pm *FESTA DELL'UVA – GRAPE'S FAIR IN VO'
Election of Miss "Reginetta Regionale dell'Uva"*

Sunday September 19

8.00am – 10.00pm *Competition Center is open in Bresseno, Piazza del Mercato*

TEOLO

10.00am – 1.00pm *World Cup MTBO – Long race*
2.00pm – 4.00pm. *National race MTBO Long*
6.00pm *Prizegiving Ceremony World Cup and National Race*
7.00pm *Team Leaders' Meeting (Council Hall, Treponti di Teolo)*
7.30pm *Open meeting IOF MTBO Committee*

Monday September 20

8.00am – 7.00pm *Competition Center is open in Bresseno, Piazza del Mercato*

TEOLO

9.30am *World Cup MTBO – Relay*
1.00pm *National race MTBO Middle (Mass Start)*
2.00pm – 6.00pm *Guided tours Parco dei Colli Euganei*
6.00pm *Prizegiving Ceremony World Cup Relay*
Prizegiving Ceremony World Cup 2010 MTBO

VÒ EUGANEO

7.30pm *Banquet*

FOLLOWING EVENTS

Tuesday September 21 to Friday September 24

TRAINING CAMP TO WOC MTBO 2011

Colli Berici (Vicenza) – 10-30 kms from Teolo and Colli Euganei, close to event areas of MTBO WOC 2011, will host an official MTBO training camp to that event.

Details and programme available on WOC MTBO 2011 official web sites.

Saturday September 25

ASOLO (Treviso)

10.00am *Coppa Italia MTBO Middle*

Sunday September 26

MUSSOLENTE (Vicenza)

10.00am *Trofeo delle Regioni d'Italia MTBO, team race, open*
info : *<http://www.misquiorient.it/mtb>*

EVENT AREAS AND MAPS



Vò Euganeo – middle race

Map scale 1:15.000, contour interval 5 m. , survey 2010.



Teolo – long race and relay

Map scale 1:15.000, contour interval 10 m. , survey 2010.

Vò Euganeo and Teolo – Parco dei Colli Euganei

*The hills of **Colli Euganei**, which will host all the races, offer many different slope and forest situations. Saturday's middle race area is made of gentle slopes with vineyards, where a dense network of tracks gives opportunities for many route choices and fast decision making. Both Sunday long race and Monday relay will take place on a more steep and complex series of hills, where sometimes dense vegetation and poor visibility makes map reading more demanding. Track network is rich and complex, contours play an important role in route choices and navigation.*

*East from Colli Euganei the famous turistical **thermal area** of **Abano** and **Montegrotto** offers many top-level accommodation, and spa facilities.*

*In the area, the city of **Padova** is absolutely worth a visit, for the great museums and architectural sites.*

Info: <http://www.turismopadova.it> (for both city and thermae).

*Top of Colli Euganei hills offer invaluable panoramas over the lower **Veneto** and **Pianura Padana** – the Po river flat.*

*On the western side, **Monti Berici** are near and clearly visible. These hills, much less steep than Colli Euganei, will host the **MTBO WOC in 2011.**, as well as the official Traing Camp which will follow World Cup Final Round. Monti Berici are less than 10 kms from Teolo and Colli Euganei.*

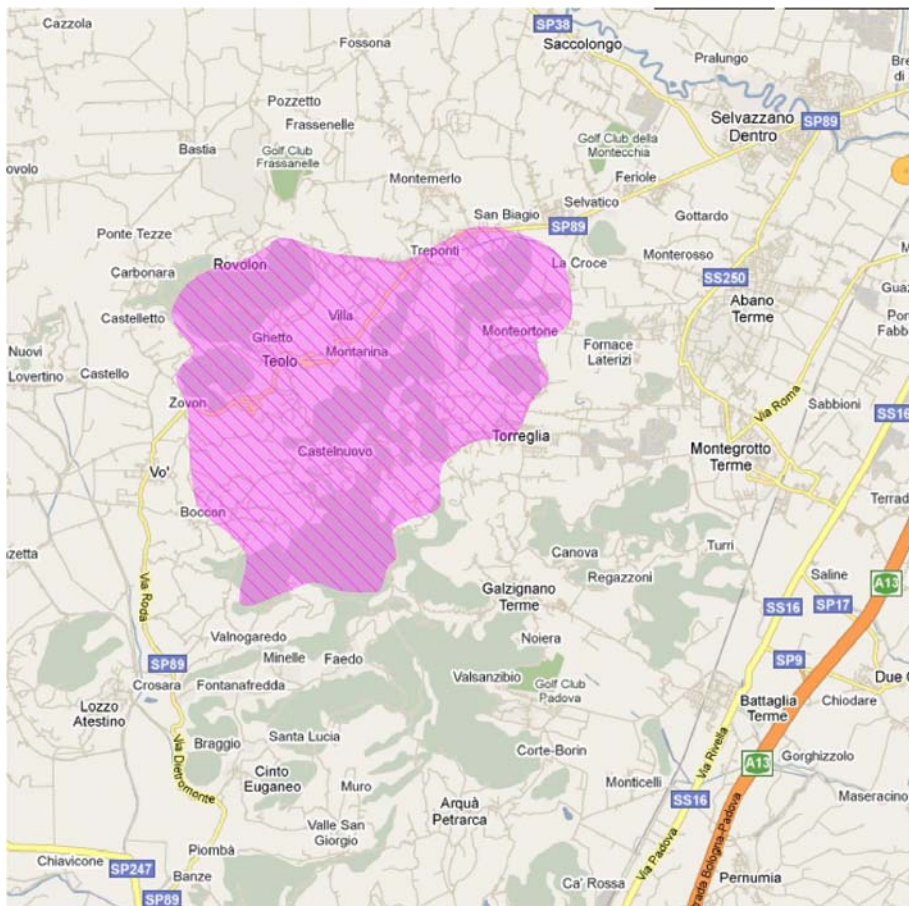
***Asolo** and **Mussolente**, where two national races will be held one week after World Cup, are about 1 hour drive from Teolo, Abano and Colli Euganei.*

EMBARGOED AREAS

Colli Euganei (Teolo, Vò Euganeo and Torreglia)

Hills around Teolo, Treponti, Torreglia and Castelnuovo are embargoed to all participants from 1/3/2010.

Neither competitors nor team officials are allowed to wander the area out of car roads, nor hold any kind of map (out of a standard road map), in the area shown in the following map:



Official basemaps and air photos of the area are publicly available through Regione Veneto web site <http://cartografico.regione.veneto.it>

TRAINING MAP

A foot orienteering map exists on Colli Euganei, which may be used for trainings : Arquà-Baone, 1:10000 scale, contour interval 5m., survey 2001.

*Other training maps have been published by other clubs in Veneto.
On request, organizers will be please to help you gat in contact with owner clubs.*

ORIENTEERING MAPS IN THE AREA

A part of the Teolo map had been published some years ago for foot orienteering: Torreglia, 1:15000, contour interval 10m., survey 2004

Actually Torreglia map is 100% included into the embargoed area. Wandering anywhere in the area whilst holding the map will be sanctioned as a violation to the embargo.

CLASSES AND ENTRY FEES

WORLD CUP INDIVIDUAL – races 1 & 2

ME

WE

No age restrictions.

Maximum entry per member federation is 6 men and 6 women.

*Entry fee is **30,00 € / rider**, for any single race.*

WORLD CUP RELAY – race 3

Mixed

No age restrictions.

Maximum entry per member federation is 4 mixed teams, each consisting of 3 team members including at least 1 woman.

*Participants out of any relay team will **not** be allowed to ride the WCup race. They can be entered to the national race which will follow the relay event.*

*Entry fee is **90,00 € / team**, (3 riders).*

NATIONAL EVENTS – races 1, 2, 3

M16 M20

W16 W20

ME MA MB

WE WA WB

M35+ M45+ M55+ M65+

W35+ W45+

Non competitive : **M12^(*)**

W12^(*)

*According to national federation rules, entry fee is **8,00 € / rider** for each open race.*

ENTRIES

Entries to any of races are to be sent via e-mail, by filling up the enclosed form, to :

entries@mtboitaly2010.it

*by August 31st 2010. Entry fees are to be paid by September 7th 2010, by bank transfer. Details and bank account on the entry form. In case of any special need, please contact OC **before August 31st***

info@mtboitaly2010.it

ACCOMMODATION AND TRANSPORT

The organizing committee does not arrange accommodation and transport from and to airport and railway station, or between race venues.

For any of these issues, as well as for any tourist information and suggestion, you may contact a local agent. The Organizing Committee recommends:

Jockey Viaggi

Via Euganea Treponti, 125/127

35033 - TEOLO (PD)

Ph. +39 0499902930

Fax +39 0499902933

e-mail: info@thermal-hotels.com

COMPETITION RULES

IOF Competition Rules for MTB-O Events – 2010

International Specification for MTB Orienteering Maps 2010

Special rules for MTBO World Cup – 2010

IOF Anti-Doping Rules – 2010

Off-road riding and crossing

All three races take place in environmental protected areas.

According to Rule 17.4, riding off the tracks or trail network drawn on the map is strictly forbidden, as well as crossing off the track without riding (i.e. walking and carrying the bike).

A visible track or path which is not drawn on the map is therefore to be considered a forbidden route.

Should an off-road connection be allowed riding through, it will be clearly shown on the map, and specified in pre-race bulletins and meetings.

In order to allow race officials to check any violation and disqualify trespassers it is also not allowed to ride with number bib dirty, broken or otherwise not clearly visible.

SPORTident electronic punching system

All races will be organized using SPORTident[®] electronic punching system.

Participants will be asked to specify individual SI card code in the entry form.

SI cards will be available for rent, and should be requested on the entry form.

PROMOTING AND SUPPORTING BODIES

ENTE PARCO COLLI EUGANEI

COMUNE DI TEOLO (Padova)

COMUNE DI VO' EUGANEO (Padova)

REGIONE VENETO

PROVINCIA DI PADOVA

FISO Federazione Italiana Sport Orientamento

CONI Comitato Olimpico Nazionale Italiano