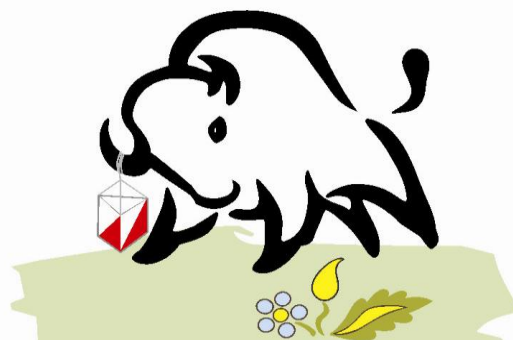


BULLETIN 2.1

JUNIOR WORLD ORIENTEERING CHAMPIONSHIPS



JWOC2011

Rumia-Wejherowo

Rumia



Wejherowo



Pomerania
Province



Wejherowo
District



Wejherowo
Administrative
District



Lębork



International
Orienteering
Federation



Polish
Orienteering
Association



**July 2 – July 9, 2011 Wejherowo-Rumia,
Poland**

Release date – November 19, 2010

“UKS Siódemka” Rumia Orienteering Club invites all national orienteering federations to join the Junior World Orienteering Championships 2011 to be held in Poland.

- **Organizer**
JWOC 2011 will be organized by UKS “Siódemka” Rumia and Polish Orienteering Association.
- **Event Director**
Jan Klawiter
- **Secretariat, information**
UKS Siódemka Rumia
Ul. Batorego 29
PL-84-230 Rumia
Poland
Email: info@jwoc2011.pl
Phone: +48 603 923 897 - English
+48 663 775 755 - Polish
Web: <http://www.jwoc2011.pl>
- **Senior IOF Event Adviser**
Radoslav Jonas (SVK)
E-mail: radoslav.jonas@centrum.sk
- **National Controller**
Jerzy Antonowicz
E-mail: jerzy.antonowicz@inetia.pl
- **Course planner**
Sprint: Tobias Borger
Long, Middle, Relay: Michał Motała
- **Maps**
Sprint: Piotr Sierzputowski
Long: Lech Trzpil and Jerzy Parzewski
Middle, Relay: Michał Motała
- **Media and press**
Maciej Grabowski
maciek.grabowski@gmail.com
- **Venue**
The Event Centre will be in Wejherowo, **Przebendowski and Keyserling Palace**, perfectly located for reaching all the event sites and training areas. The Event Centre is situated close to the city centre and long and middle distance finish area.

More information available on:
<http://www.wejherowo.pl/new/index.php?c=en&l=mlewa&s=seindex&p=mprawa>

- **Programme**

-  **25.06-1.07.2011 – Training Camp**
-  **2.07.2011 – Saturday – arrival**
Model Events (Long, Sprint)
Opening Ceremony, City centre in Wejherowo
-  **3.07.2011 – Sunday**
Model Event (Long, Sprint)
Sprint – Lębork
1st. 4days public event - Lębork
-  **4.07.2011 – Monday**
Long Distance - Wejherowo
-  **5.07.2011 - Tuesday – rest day**
Model Events (Middle, Relay)
Social program: Trip to Gdansk, Trip to Baltic See
2st. 4days public event - Wejherowo
-  **6.07.2011 – Wednesday**
Middle Distance, qualification – Wejherowo
3st. 4days public event - Wejherowo
-  **7.07.2011 – Thursday**
Model Event (Relay)
Middle Distance, final – Wejherowo
4st. 4days public event - Wejherowo
-  **8.07.2011 – Friday**
Relay - Gniewowo
Closing Ceremony and Banquet - Wejherowo
-  **9.07. 2011 – Saturday – departure**

- **Visa**

For more information, please visit the official site of the Ministry for Foreign Affairs:
<http://www.msz.gov.pl/Visa,requirements,2346.html>

- **Classes and Participation Restrictions**

W 20, M 20. All competitors must be born in 1991 or later and shall have full passport-holding citizenship of the country they are representing.

- **Entries**

The deadline for preliminary entries is **April 30, 2011**. The entry form in pdf or xls is available on the JWOC2011 web-site. This form **MUST** be used. The following information is obligatory:

- Number of competitors (maximum of 6 men and 6 women)
- Number of relay teams (maximum 2 male and 2 female teams)
- Number of officials (maximum 4)
- Number of additional representatives from the Federation (The price has not yet been confirmed, but will be similar to that for team members given above)
- Team leaders' details
- Accommodation requirements (category A, B, C, D)
- Participation in the training camp (June 25 – July 1)
- Dates of arrival and departure

The final entries with the names of competitors including reserves and officials must be sent to the organizers not later than by **June 15, 2011**. The entry form for final entries will be enclosed in Bulletin 3.

- **Entries address**

JWOC2011
UKS Siódemka Rumia
Ul. Batorego 29
PL-84-230 Rumia
Poland
Email: info@jwoc2011.pl

- **Event Transportation**

Transport between accommodations and arenas will be provided for all competitors and officials and is covered by the entry fee. Teams are allowed to organize their own transport to and from arenas but no discount on the entry fee will be given. All competitors are required to use the official transport from the accommodation to the start area.

- **Entry Fee, Accommodation and Food Costs**

Prices are in PLN –Polish Zloty, per person

Category accommodation	Full Offer	Accommodation with board	Comments
A	2000	1400	3* hotels A1 – Hotel Victoria A2 – Hotel Murat
B	1850	1250	2* hotels Hotel Bliza
C	1400	800	Youth Hotels
D	1400	800	Youth Hotels

Entry fees for JWOC per person in PLN –Polish Zloty

Accreditation	Team official	Sprint	Long	Middle	Relay
150	250	120	120	120	200 per team

Please note :

- **A1** - Hotel Viktoria, <http://www.hotelvictoria.pl> 2 km from Event Centre, 2-3 beds rooms, SPA (sauna, swimming pool), 100 place available
- **A2** - Hotel Murat, <http://www.murathotel.com/> 6 km from Event Centre, 3-4 beds rooms, SPA, 150 place available
- **B** - Hotel Bliza, <http://www.hotelewam.pl/Hotel2.aspx?hid=4&did=8&lang=2> 1 km from Event Centre, 2 beds rooms, free WI-Fi, sauna, 110 place available
- **C** - Youth Hotels, 1 km from Event Centre. 1 box for 16 persons (4 rooms, 1 living room, bathroom), 60 places available
- **D** - Youth Hotels, 1 km from Event Centre. 2-4 beds rooms, the shower and the toilet available in the corridor, 80 places available.
- Full offer includes: accommodation with board, fee for all race and accreditation.
- Participants must pay accreditation fee in addition to the fee for each race
- Team leaders/Team official must pay accreditation fee and team official fee

- All meals are covered by the accommodation fee (including dinner on Saturday July 2 and breakfast on Sunday July 9).
- The Accreditation fee includes participation in the banquet and party on Friday evening, participation in the Opening and Closing ceremonies, transport to and from the competition grounds, participation in model events
- The Team official fee includes: competitions maps, start and results lists, participation in model events and in public competitions.

- **Payment**

All payments must be received by **May 20 2011**, into the account of the organizer in Polish Zloty (PLN) to:

Owner: UKS Siodemka
Ul. Batorego 29
84-230 Rumia
Poland

Bank name and address: Bank Rumia Spoldzielczy
Ul. Morska 21
84-230 Rumia
Poland

Swift: GBWCPLPP

Account: PL02835100030018226920000010

- **Press and media**

Press, media and extra representatives will be accommodated in hotel near the event centre. Press centre will be both at the hotel and at the event centre. The price for the press and media has not yet been confirmed, but will be similar to that for team members given above, with the addition of a small service charge. Final details will be included in Bulletin 3. This includes full board, accreditation, model event, start and result lists, maps, transport and banquet. Final registration should be received by **June 1st**, using the entry form in Bulletin 3. The fee should be paid by the **June 1st, 2011** to the account given under Payments.

- **Preliminary Course winning times:**

The courses follow the IOF recommendations for winning times.

women	men	
55	70	Long distance
20-25	20-25	Middle distance
12-15	12-15	Sprint
25-30	25-30	Relay for each leg
75-90	75-90	Relay, sum of fastest times for all legs

- **Punching System:**

Sportident punching system will be used.

- **Clothing:**

All competitors should wear clothes covering all parts of the body, except arms and head, during the middle and long distance competitions and the relay. The clothing in the sprint competition is free.

- **Training maps**

Nr	Map	Year	Scale	Event Relevance	Distance from Event Centre	Comment
1	Biała Rzeka	2007	1:10 000 1:15 000	Long Middle	3 km	
2	Piekielko	2006	1:10 000	Middle Relay	15 km	
3	Gniewowo	2006	1:10 000 1:15 000	Long Middle	10 km	Part of the map
4	Markowcowa Góra	2006	1:10 000 1:15 000	Long Middle Relay	15 km	
5	Głogowko	2009	1:10 000	Relay	15 km	
6	Piekielko II	2009	1:10000	Relay	15 km	
7	Rezydencja	2009	1:10 000	Relay	15 km	
8	Hotel Bardo	2008	1:10 000	Relay	15 km	
9	Wejherowo – Stare Miasto	2010	1:4 000	Sprint	1 km	Terrain close
10	Rumia- szkola	2008	1: 4000	Sprint	10 km	
11	Wejherowo OSW	2010	1: 4000	Sprint	1 km	
12	Nowy Dwór Wejherowski	2010	1:15 000 1:10 000	Long Middle, Relay	10 km	
13	Borowo	2010	1:10 000	Relay	10 km	
14	Nowy Dwór	2010	1: 4 000	Sprint	10 km	cancel
15	Lebork – stadion	2010	1:4 000	Sprint	35 km	cancel
16	Wejherowo Kapino	2011	1:15 000 1:10 000	Long Middle, Relay	3 km	Available from May 2011

- **Training Camps**

Following training periods are offered:

- July 31 – August 8, 2010
- June 25 – July 1, 2011 (the week prior to JWOC)

The accommodation will be held at the same place as the Event Centre of JWOC 2011. A complete package including accommodation, meals and training maps with control posts. The cost will be published on the web-site <http://www.jwoc2011.pl>. Other types of accommodation such as youth hostels, summer houses or tourist flats are available. On special request, other dates for training can be organized.

- **Embargoed Areas with Distance from Event Centre**

1. Centre of Łębork city (35 km)
2. Wejherowo - Zamkowa Góra (1 km)
3. Rumia - Szmelta (10 km) - reserve area
4. Gniewowo-Wyspowo-Nowy Dwór Wejherowski (15 km)
5. Dąbrze (18 km) – reserve area
6. Wejherowo centre of city (1km) – reserve area

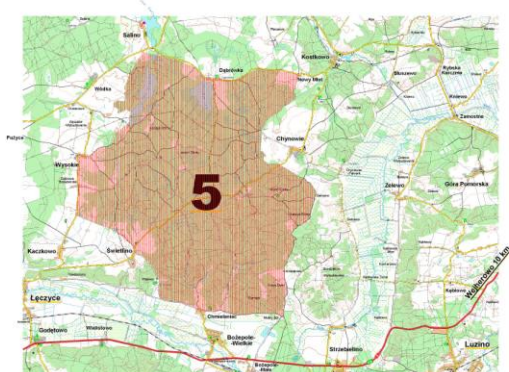
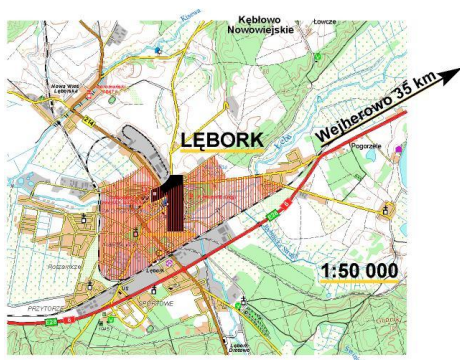
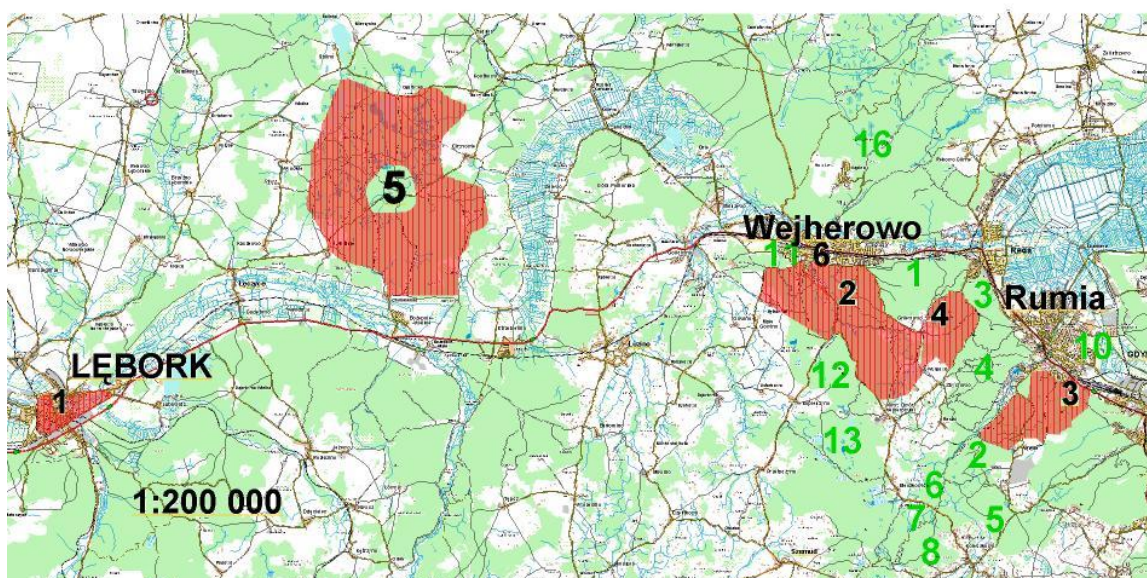
With reference to the IOF Competition Rules (article 26.6), the listed areas are embargoed for all potential JWOC2011 team members as well as coaches, team leaders and other persons that may be in a position to give information to the team members. Specifically, until JWOC2011 is finished, in the embargoed areas there will be:

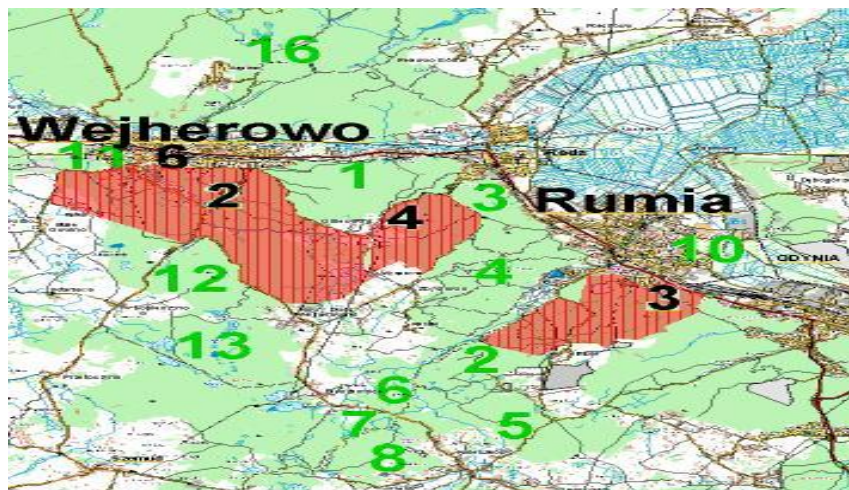
- no organized orienteering
- no training sessions, route testing, etc.
- no surveying or other use of maps

This applies to potential participants and to persons who may become team leaders, coaches or similar. It is permissible to pass through the embargoed areas using paved public roads.

The old maps of areas of competition are published on a website. The geographic locations of the embargoed (marked by red numbers) and trainings areas (marked by green numbers) are shown in this map:

JWOC 2011 embargoed and trainings areas





- **Description of the terrain**

The sprint distance (1:4000, 2,5 m contour interval) will be held at the city centre in Łębork 35 km from Wejherowo. The terrain is mainly urban with a number of old buildings. Some parts of the terrain consist of residential areas. There are canals, many footpaths and scattered park areas with big hills up to 20m.

The long distance (1:15.000, 5 m contour interval) and middle (1:10.000, 5 m contour interval) will take place in a typical hilly Pomeranian terrain with a moraine area. Northern and eastern parts are near to the urban area. The forests are made up of beech trees and the runability is mostly medium. The visibility is good.

Relay distance (1:10.000, 5 m contour interval) courses will be set in a beech forest, which include varied microsculpture with marshes and numerous paths. The difference between the highest and the lowest points of terrain is up to 50 m. The runnability and visibility are good.

- **Public competitions**

The Public Competitions – Kaszebe O-Cup consisting of 4 events will be organized. There will be courses on the same maps as the JWOC competitions. More information at the web site.

- **Weather conditions in Poland**

The weather in Poland in July is typically warm and pleasant Polish summer day may offer everything from rain to sunshine. Day temperatures may range between +25 and +35 degrees centigrade.

Preliminary Entry Form

To be filled in by National Federations. Must be submitted by April 30th, 2011.

Contact details

JWOC 2011

Email: info@jwoc2011.pl

Country

Team leader

Name	<input type="text"/>
Address 1	<input type="text"/>
Address 2	<input type="text"/>
Phone	<input type="text"/>
Mobile	<input type="text"/>
E-mail	<input type="text"/>

Women, individual

Women, relay

Men, individual

Men, relay

Team officials

Number of additional representatives from the Federation

Preferred category of accommodation

A1

A2

B

C

D

Priority

Trening camp

Number of men

Number of women

Time of arrival	Date	App. Time of day	Means of transportation
<input type="text"/>	<input type="text"/>	<input type="text"/>	<input type="text"/>
Time of arrival	Date	App. Time of day	Means of transportation
<input type="text"/>	<input type="text"/>	<input type="text"/>	<input type="text"/>

Additional notes