

COMITATO ORGANIZZATORE



MTBO  
WORLD  
CUP

VENETO • ITALY



PROVA FINALE

MTBO  
WORLD  
CUP



2010 VENETO • ITALY

17-20 SETTEMBRE

TEOLO (PD) • ROSOLINA MARE (RO)

CAMPIONATO ITALIANO MTB ORIENTEERING



**ORITOURIST**

Associazione per la promozione ecosostenibile dei territori locali

Via E. Ferrari, 15 - 30037 Scorzè (VENEZIA) - Tel. 041 5845003 - info@oritourist.it

# MTBO WORLD CUP

## VENETO - ITALY

17-20 SEPTEMBER 2010  
TEOLO - ROSOLINA MARE



### BULLETIN N° 1

- Organization, roles and addresses
- Program
- Event area and sites
- Terrains and maps
- Embargoed areas
- Race details, classes and participation
- Rules
- Accommodations and transports
- Local Promoters

[www.mtboitaly2010.it](http://www.mtboitaly2010.it)

## **ORGANIZATION, ROLES AND ADDRESSES**

### **Organizing Committee**

MTBO World Cup will be organized by  
**Comitato Organizzatore MTBO-WC Italy 2010**  
c/o Cesare Tarabocchia  
Via Colarich, 58/A  
34015 MUGGIA (TS) Italy  
[www.mtboitaly2010.it](http://www.mtboitaly2010.it)

### **Event Director**

Cesare Tarabocchia  
e-mail [info@mtboitaly2010.it](mailto:info@mtboitaly2010.it)

**Vice Event Director** Michele Mogno

**Event Center** Gianpietro Mazzeni – Or. Galilei Venezia

**Director of Arrangements** Alessandro Casarin – Or. Swallows Noale

**Information, economy marketing** Michele Mogno – Mauro Fizzoni

**Administrative matters** Arianna Ghedin

**Associazione ORITURIST**  
Via Ferrari 15. 30037 Scorzè (VENEZIA)  
Ph. 041/5845003 – Fax 041/5845007  
[info@oritourist.org](mailto:info@oritourist.org)

### **Mapping**

Daniele Danieli, Alessandro Casarin

### **Information**

Cesare Tarabocchia  
mobile: +39 335 8298594 - e-mail [info@mtboitaly2010.it](mailto:info@mtboitaly2010.it)

### **IOF Event Adviser**

Sandor Talas (HUN)  
mobile: +36 20 364 2734 - e-mail: [sandor.talas@gmail.com](mailto:sandor.talas@gmail.com)

### **National Controller**

Simone Grassi  
e-mail: [vecchiotasso.simo@fastwebnet.it](mailto:vecchiotasso.simo@fastwebnet.it)

### **Accommodation**

Jockey Viaggi – *Mr. Giancarlo Reverenna*  
Phone : +39 0499902930 fax : +39 0499902933  
e-mail: [info@thermal-hotels.com](mailto:info@thermal-hotels.com)

## **EVENT PROGRAM – 1 PARCO DELTA DEL PO**

**Thursday 16 September**

### **ADRIA (ROVIGO)**

- 11.00AM Press Conference – presentation of “World Cup Final 2010” and “Italian Championship MTBO Sprint and Middle”
- 1.00 – 6.00PM Guided tours to city of Adria and Delta del Po natural park

**Friday 17 September**

Arrival of Teams

- 10.00AM – 9.00PM Event Center is open in Adria and Teolo

### **ADRIA (ROVIGO)**

- 1.00 – 4.00PM Guided tours to city of Adria and Delta del Po natural park Model Even in PORTO VIRO (17 kms from Adria)
- 5.30PM Opening Ceremony of “World Cup Final 2010”
- 7.30PM Team leaders’ meeting in Adria
- 8.30PM Official “Welcome Dinner” for team leaders and organizers

**Saturday 18 September**

- 7.00AM – 5.00PM Competition Center is open in Rosolina Mare

### **ROSOLINA MARE (ROVIGO)**

- 11.00AM – 1.00PM World Cup MTBO – Sprint race
- 2.00pm Prizegiving Ceremony World Cup Sprint
- 3.00pm - 5.00pm. Italian MTBO National Sprint Championship
- 6.00PM Prizegiving Ceremony Italian Sprint Championship

### **TEOLO (PADOVA)**

- 7.30PM Team leaders’ meeting in Teolo

## EVENT PROGRAM – 2 PARCO COLLI EUGANEI

### Sunday 19 September

7.00AM – 8.00PM Competition Center is open in Teolo

#### TEOLO (PADOVA)

10.00AM – 12.00AM World Cup MTBO - Middle race

12.00AM – 2.00PM Italian MTBO National Middle Championship

3.00PM Prizegiving ceremony in Teolo

4.00PM – 7.00PM Free touristic tours Colli Euganei and Padova

7.30 PM Team leaders' meeting in Teolo

### Monday 20 September

7.00AM – 3.00PM Competition Center is open in Teolo

#### TEOLO (PADOVA)

10.30AM World Cup MTBO - Relay

9.00AM National MTBO race (mass start – middle)

2.00PM Final prizegiving ceremony World Cup MTBO 2010

#### ABANO TERME

7.30PM Closing ceremony and Official banquet for all national teams.

## **EVENT PROGRAM – 3 VICENZA and ASOLO**

The week after World Cup Tour, an official training camp to WOC MTBO 2011, and a national MTBO race will be organized by teams not related to the World Cup Organizing Committee.

We strongly suggest that the teams stay and participate the whole week.

From Tuesday 21 September to Saturday 25 September

### **TRAINING CAMP in Veneto (Monti Berici, VI)**

Official Training Camp to the World Orienteering Championship 2011 - Vicenza - Italy  
Info : [viale@orienteering.it](mailto:viale@orienteering.it)

Sunday 26 September

### **TROFEO DELLE REGIONI D'ITALIA MTBO (Asolo, TV)**

National MTBO Race in Asolo (TV)  
Info : <http://www.misquilorient.it/>

## EVENT AREAS AND MAPS

### Adria, Porto Viro and Rosolina – Parco Delta del Po

**Delta del Po** areas are flat, mainly cultivated areas belonging to the **Po river** mouth area.

Some complex urban areas like **Adria**, administrative seat of **Parco Delta del Po**, are interesting for sprint city orienteering.

In the neighbourhoods, some low-hilly forests, sandy and dense, offer complex navigation to both foot-o and MTBO athletes.

A small one in **Porto Viro** will be used for the **Model Event** the day prior to the sprint.

**Rosolina Mare**, a great turistical sand beach facing the **Adriatic Sea**, offers a pinewood forest, slightly hilly due to a very complex sand dunes network. The tricky network of roads and tracks will host the **Sprint race** on the first day.

### Teolo and Abano – Parco dei Colli Euganei

The hilly, steep hills of **Colli Euganei** will host both the **Middle race** on Sunday, and the **Relay** on Monday.

Terrain is completely different from Delta del Po areas, with very steep slopes and dense vegetation, often with very poor visibility

Track network is rich and complex, contours play an important role in route choices and navigation.

East from Colli Euganei the famous turistical **thermal area** of **Abano** and **Montegrotto** offers many top-level accommodation, and spa facilities.

In the area, the city of **Padova** is absolutely worth a visit, for the great museums and architectural sites.

Info: <http://www.turismopadova.it> (for both city and thermae).

Top of Colli Euganei hills offer invaluable panoramas over the lower **Veneto** and **Pianura Padana** – the Po river flat.

On the western side, **Monti Berici** are near and clearly visible. These hills, much less steep than Colli Euganei, will host the **MTBO WOC in 2011**. On the week after World Cup, an international training camp will be organized there, by the organizing committee of 2011 MTBO WOC. Monti Berici are less than 10 kms from Teolo and Colli Euganei.

**Asolo**, where a national race will be held one week after World Cup, is about 1 hour drive from Teolo, Abano and Colli Euganei.

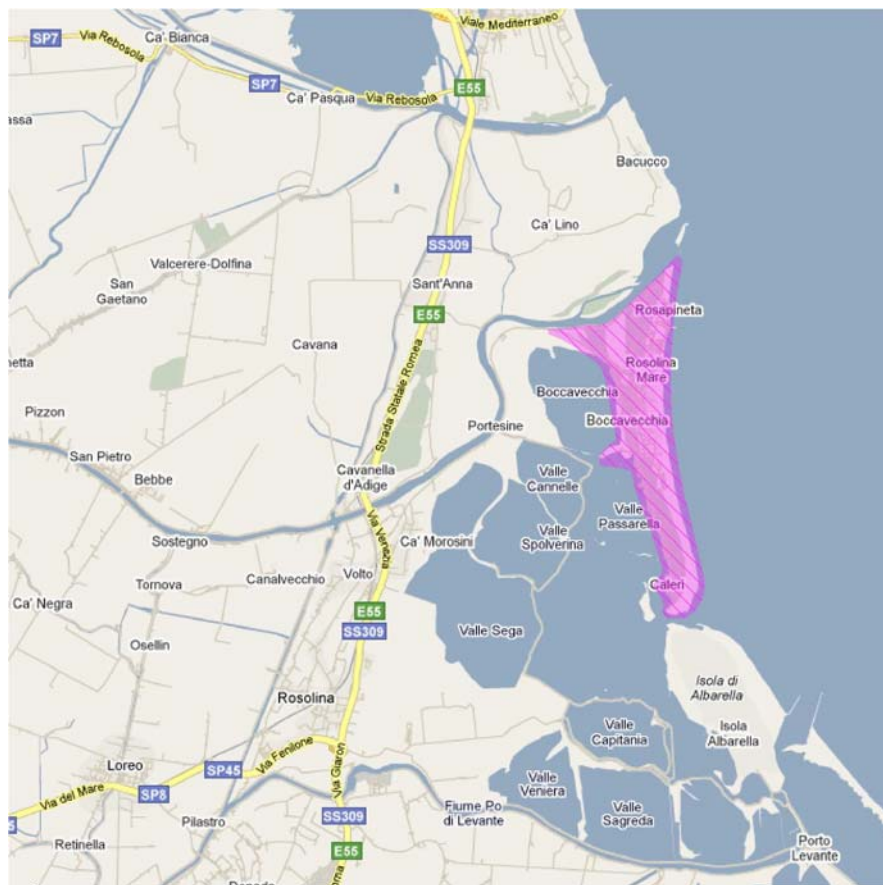
## EMBARGOED AREAS

### 1. Rosolina Mare

**The whole area of Rosolina Mare and vicinity**

**Rosolina Mare:** the whole peninsula of Rosapineta, Rosolina Mare and Porto Caleri is embargoed to all participants from 1/3/2010.

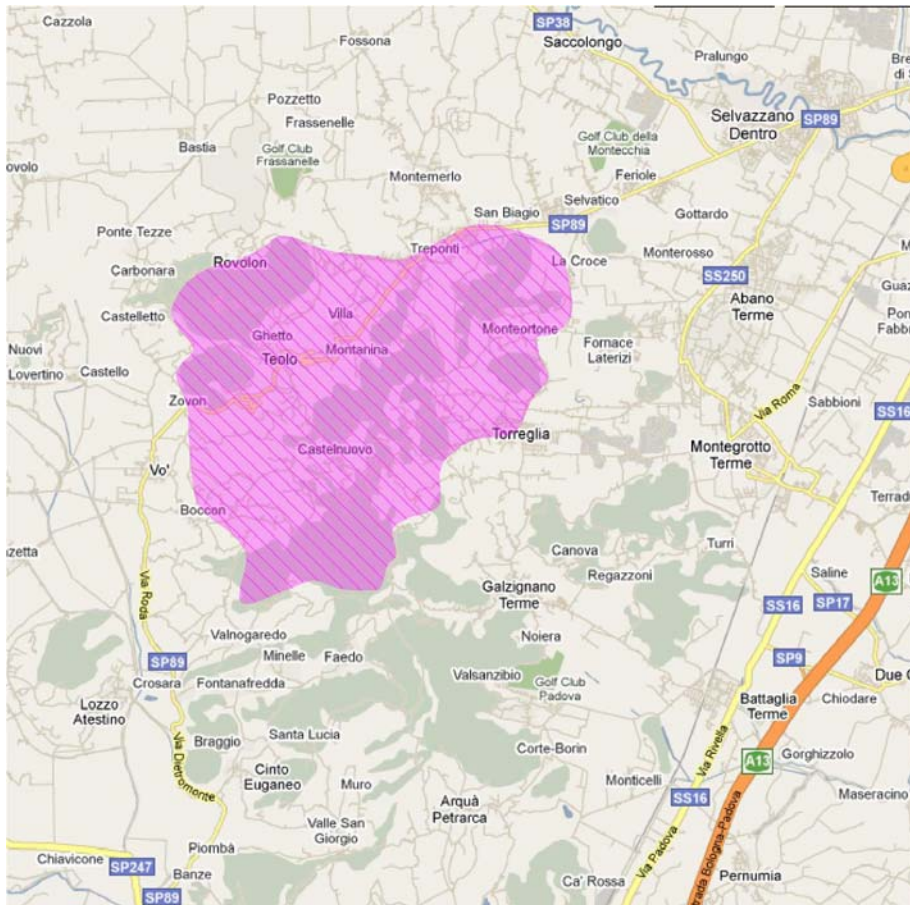
See following map.





## 2. Teolo - Torreglia

Hills around Teolo, Trepointi, Torreglia and Castelnuovo are embargoed to all participants from 1/3/2010.  
See following map.



## CLASSES AND ENTRY FEES

### WORLD CUP INDIVIDUAL – races 1 & 2

ME

WE

No age restrictions.

Maximum entry per member federation is 6 men and 6 women.

### WORLD CUP RELAY – race 3

Mixed

No age restrictions.

Maximum entry per member federation is 4 mixed teams, each consisting of 3 team members including at least 1 woman.

Participants out of any relay team will **not** be allowed to ride the WCup race. They can be entered to the national race following the relay event.

Entry fee is **30,00 €/ rider**, for any single race.

### NATIONAL EVENTS – races 1, 2, 3

M16	M20			W16	W20	
ME	MA	MB		WE	WA	WB
M35+	M45+	M55+	M65+	W35+	W45+	

*Non competitive* : M12<sup>(\*)</sup> W12<sup>(\*)</sup>

According to national federation rules, entry fee is **8,00 € rider** for each race.

## COMPETITION RULES

IOF Competition Rules for MTB-O Events – 2010  
International Specification for MTB Orienteering Maps 2007  
Special rules for MTBO World Cup – 2010  
IOF Anti-Doping Rules – 2010

### Off-road riding and crossing

All three races take place in environmental protected areas.

According to Rule 17.4, riding off the tracks or trail network drawn on the map is strictly forbidden, as well as crossing off the track without riding (i.e. walking and carrying the bike).

A visible track or path which is not drawn on the map is therefore to be considered a forbidden route.

Should an off-road connection be allowed riding through, it will be clearly shown on the map, and specified in pre-race bulletins and meetings.

In order to allow race officials to check any violation and disqualify trespassers it is also not allowed to ride with number bib dirty, broken or otherwise not clearly visible.

### SPORTident electronic punching system

All races will be organized using SPORTident<sup>®</sup> electronic punching system.

Participants will be asked to specify individual SI card code in the entry form.

SI cards will be available for rent, and should be requested on the entry form.

## ACCOMMODATION AND TRANSPORT

The organizing committee does not arrange accommodation and transport from and to airport and railway station, or between race venues.

For any of these issues, as well as for any touristical information and suggestion, you may contact a local agent. The Organizing Committee recommends:

:

### Jockey Viaggi

*Via Euganea Treponti, 125/127*

*35033 - TEOLO (PD)*

Ph. +39 0499902930

Fax +39 0499902933

*e-mail: [info@thermal-hotels.com](mailto:info@thermal-hotels.com)*

## **PROMOTING AND SUPPORTING BODIES**

**ENTE PARCO COLLI EUGANEI**

**ENTE PARCO DELTA DEL PO VENETO**

**COMUNE DI TEOLO** (Padova)

**COMUNE DI ROSOLINA MARE** (Rovigo)

**REGIONE VENETO**

**PROVINCIA DI PADOVA**

**FISO** Federazione Italiana Sport Orienteering

**CONI** Comitato Olimpico Nazionale Italiano